

Vocal

# Your Lady On The River

T. Unseth

$\text{♩} = 65$

Vocal

**X** 11 **A 1**

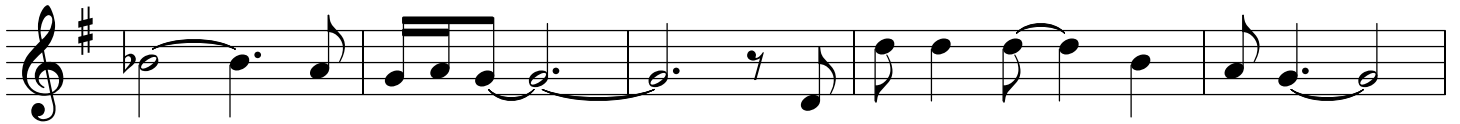
When your La - dy  
wishes to be a - lone Well, you'll find her on the  
ri - ver skippin' stones And you'll be watch - ing with all of the  
tears you have You won't even have your knees You  
listen to the love she feeds the Wood  
Don'tcha know that she's a - live?

**B 1** 7 **A 2**

Here's your la - dy finishing last night's dream  
Well you know it's a fee - lin' so clean



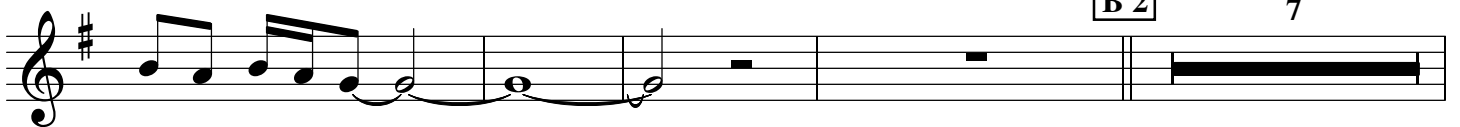
You've got the bir - ches bowed for o - ver - joy She's your



life, hey boy. You listen to them cry



and you near - by Don'tcha know that she's a -



live

**B 2**

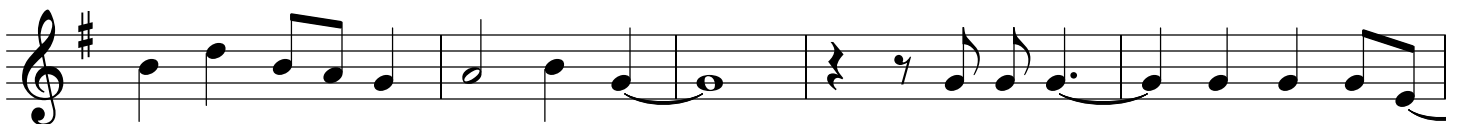
7



She'll not see you you will just hap - pen by She'll be



run - ning and talk - in' to the sky. And she will



ask you "Why do your eyes be full?" You tell her "It's just the bre -



-eze." You listen to her eyes. They've brought you

home. Yes, you know that she's a - live

**B 3** 8

The image shows a musical score for a vocal piece. The top staff is a vocal line in treble clef with a key signature of one sharp (F#). It contains the lyrics "home. Yes, you know that she's a - live". The bottom staff is a piano accompaniment line, also in treble clef with a key signature of one sharp. It features a few notes at the beginning, followed by a double bar line, then a box containing "B 3", and finally a thick black bar with the number "8" above it, indicating a repeat or a specific section.