

Bass

San

Paul Witeman Orchestra
1928

Bill Challis, Arranger
Ted Unseth, Orchestrator

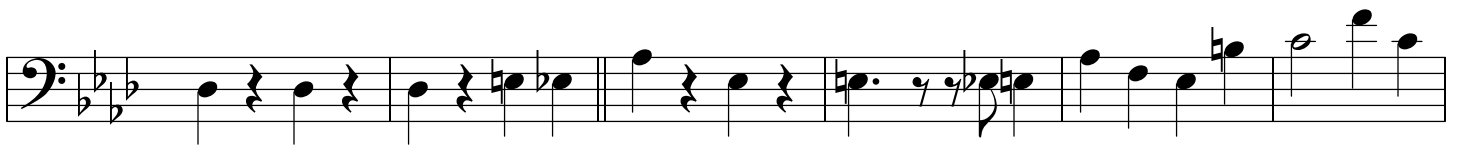
$\text{♩} = 105$

A

Bass

mf

B Cello



First staff of music in bass clef, featuring a melodic line with eighth and sixteenth notes, including a grace note.

Second staff of music in bass clef, continuing the melodic line with various rests and note values.

Third staff of music in bass clef, showing a continuation of the melodic development.

Fourth staff of music in bass clef, featuring a melodic line with a double bar line and repeat signs.

Fifth staff of music in bass clef, continuing the melodic line.

Sixth staff of music in bass clef, starting with a boxed 'E' and the word 'Cello' above the staff.

Seventh staff of music in bass clef, featuring a boxed 'F' above the staff and a dynamic marking 'sfz' below.

Eighth staff of music in bass clef, continuing the melodic line.

Ninth staff of music in bass clef, ending with a double bar line.